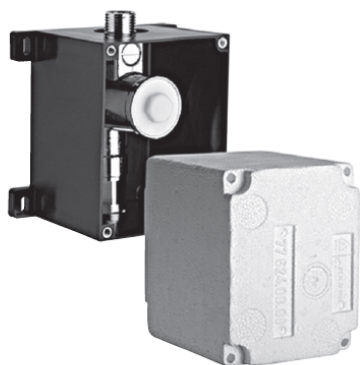


## SCHELL CONCEALED URINAL FLUSH VALVE COMPACT II



HEALTHCARE



COMMERCIAL



EDUCATION



HOTEL & LEISURE

### PRODUCT INFORMATION

011930099	Concealed urinal flush valve COMPACT II (no frame)
028080699	Urinal control EDITION E <b>chrome</b> version-mains operated
028092899	Urinal control EDITION E <b>stainless steel</b> version-mains operated

### SPECIFICATIONS

Operating voltage: 230v / 50Hz  
 9v battery  
 Solenoid valve: 6v  
 Max pressure: 0.8 - 5 bar  
 Flush rate: max. 0.3 L/S  
 Factory setting: Flush time: 2-15s adjustable  
 Range: Adjustable



### RELATED PRODUCTS

CLIFTON PACK 2	Clifton urinal bowl
JAZIRA PACK 2	Jazira urinal bowl
CAMDEN PACK 2	Camden urinal bowl
SPECTRUM PACKAGE	Spectrum urinal bowl
395300002	Sonas oval urinal
TAURUS URINAL PACK	Taurus urinal bowl
78560002	Sonas orbital urinal
18511002	Florida Back inlet Urinal inc. fixing kit
18520002	Niagra Back inlet Urinal inc. fixing kit

**MANUFACTURER** SCHELL

**PRODUCT DIMENSIONS** See technical drawing

